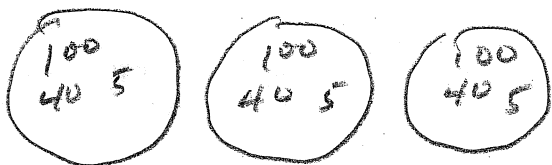


1. Circles

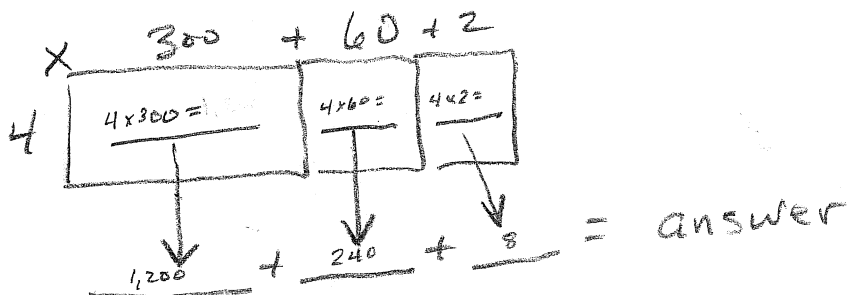
$$3 \times 145 =$$



$$\begin{array}{r} 300 \\ - 120 \\ + 15 \\ \hline 435 \end{array}$$

\* 2. Area

$$4 \times 362$$



3. Partial Products

$$5 \times 173 =$$

$100 + 70 + 3 = 500 + 350 + 15 = \underline{865}$

4. Products Below

$$\begin{array}{r} 632 \\ \times 6 \\ \hline 12 \\ 180 \\ 3600 \\ \hline 3792 \end{array}$$